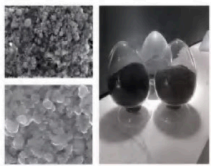




LITHIUM BATTERIES

VERTICAL INDUSTRY INTEGRATION CHAIN



MATERIAL



CELL



BATTERY MODULE



BATTERY MODULE

ADVANTAGES

- Developed with Pylontech's LFP (lithium iron phosphate) cell to ensure the highest safety
- Self-designed BMS protects the cell in all angles such as abnormal temperature, current, voltage, SoC, SoH
- Vertical industry integration ensures more than 6000 cycles with 90% DoD
- Modular design gives the end customers the power of choice of capacity
- Compatible with most of the available Hybrid inverters
- Simple buckle fixing minimize the installation time and cost



Basic Parameters	US2000	US3000
Nominal Voltage	48V	48V
Nominal Capacity (Wh)	2400	3552
Usable Capacity (Wh)	2200	3200
Dimension (mm)	442 x 410 x 89	442 x 420 x 132
Weight (Kg)	24	32
Discharge Voltage (V)	45 - 53.5	45-53.5
Charge Voltage (V)	52.5 - 53.5	52.5-53.5
Charge / Discharge Current (A)	25 (Recommend)	37 (Recommend)
	50 (Max)	74 (Max)
	100 (Peak@15s)	100 (Peak@15s)
Communication Port	RS485, CAN	RS485, CAN
Single string quantity (pcs)	8	8
Working Temperature/°C	0-50	0-50
Shelf Temperature/°C	-20-60	-20-60
Humidity	5%-85%	5%-85%
Altitude (m)	<2000	<2000
Design life	15+ Years (25°C/77°F)	15+ Years (25°C/77°F)
Cycle Life	>6000, 25°C	>6000, 25°C
Authentication Level	UL/IEC62619/CE /UN38.3	IEC62619/CE /UN38.3

